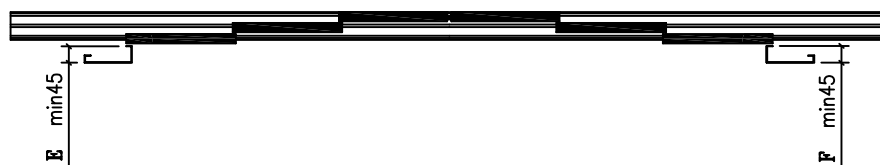
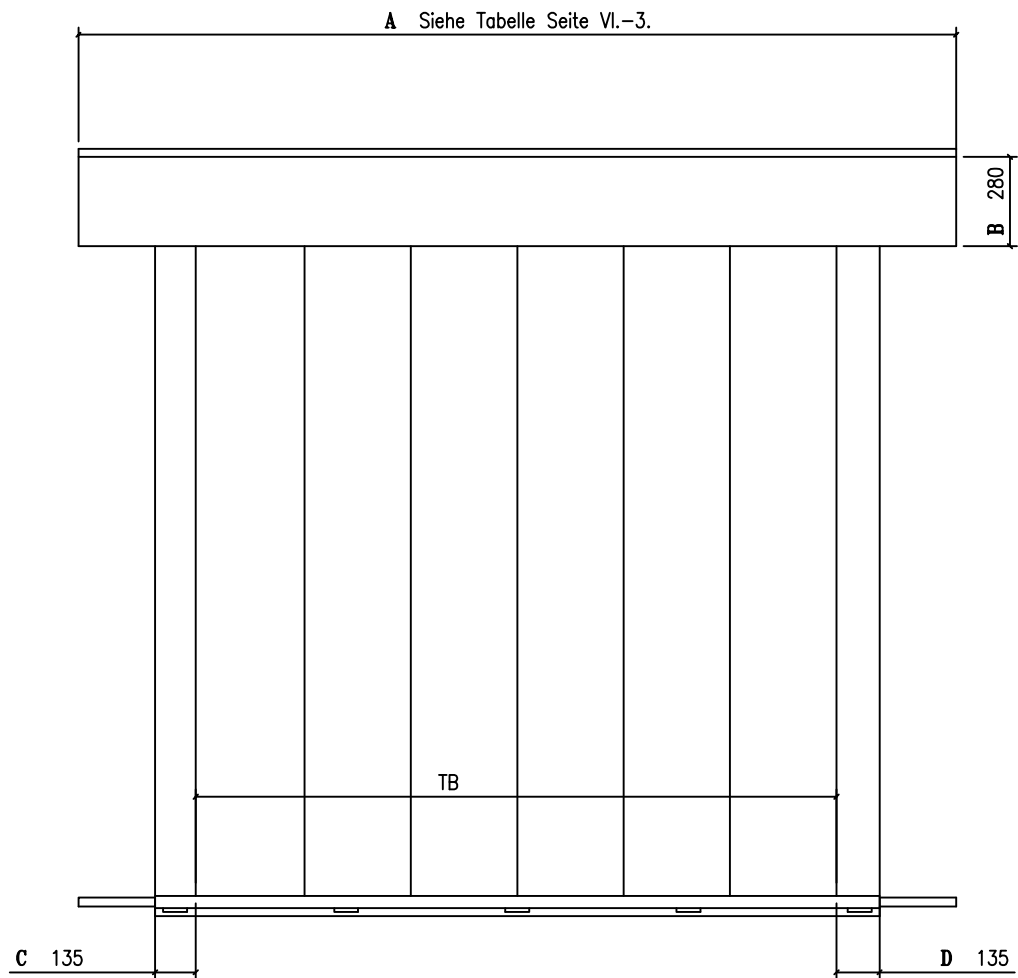
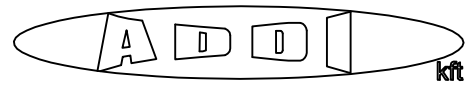


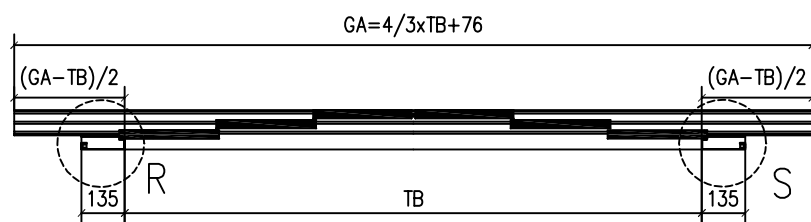
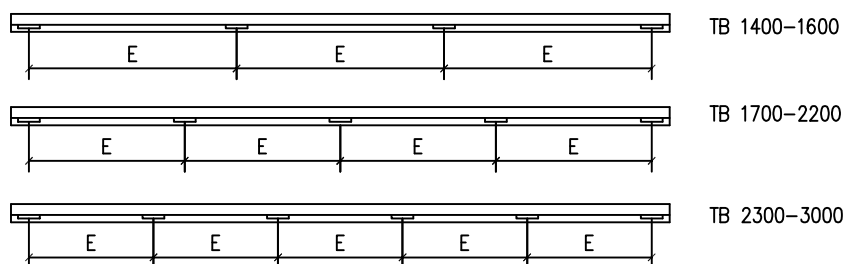
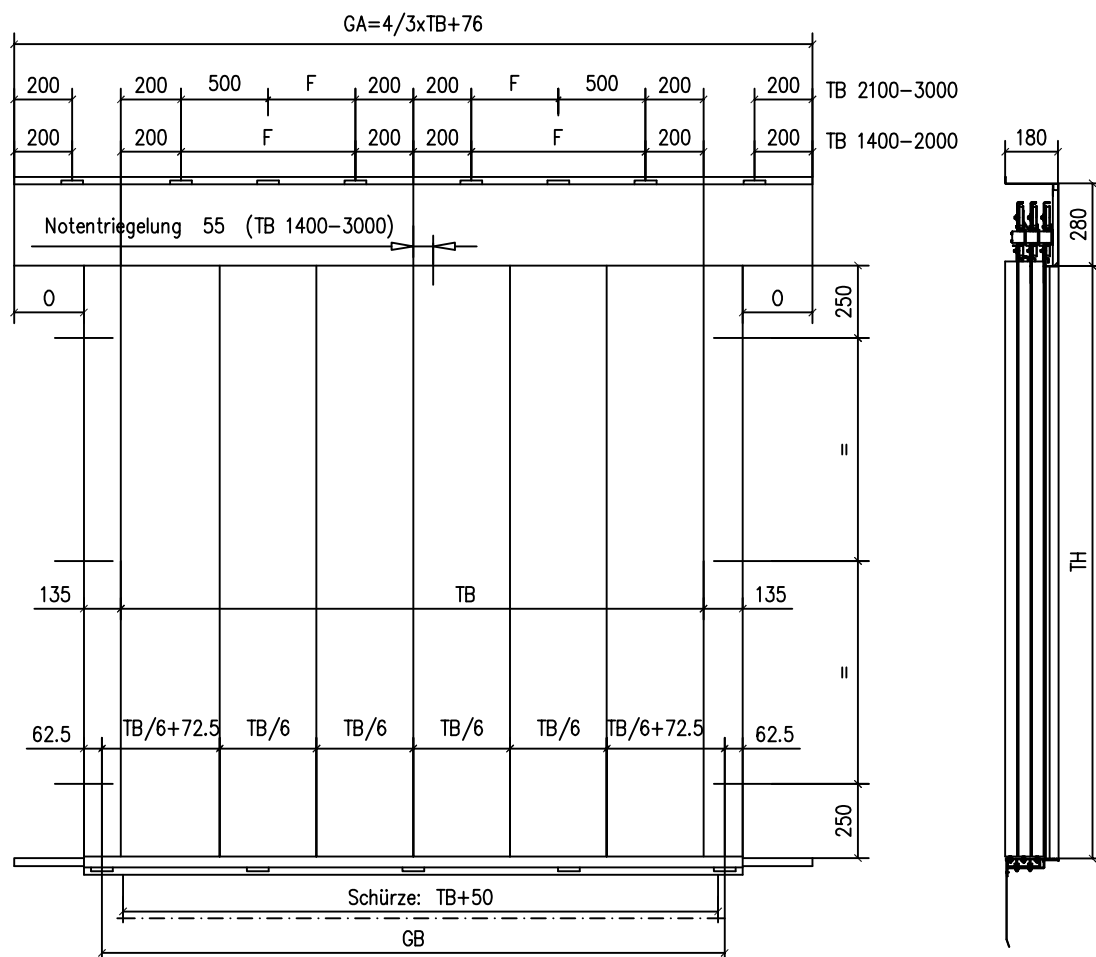
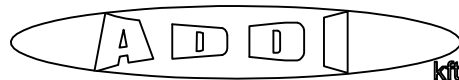
Maßblatt ST 6/Z



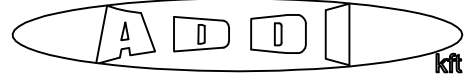
Bei Änderung der Zargentiefe bitte beide Maße (E+F) angeben.

Änderungswunsch	
A = mm	D = mm
B = mm	E = mm
C = mm	F = mm

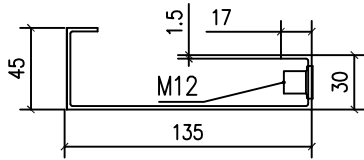
Schachttür ST 6/Z für TB 1400 bis 3000



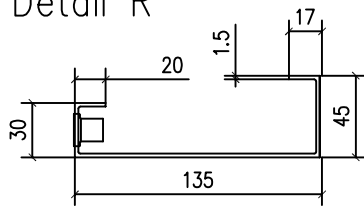
Detail 6/Z



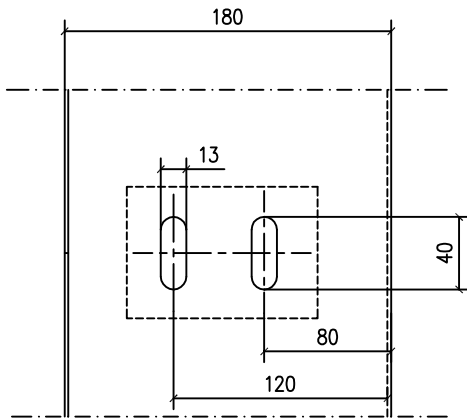
Detail S



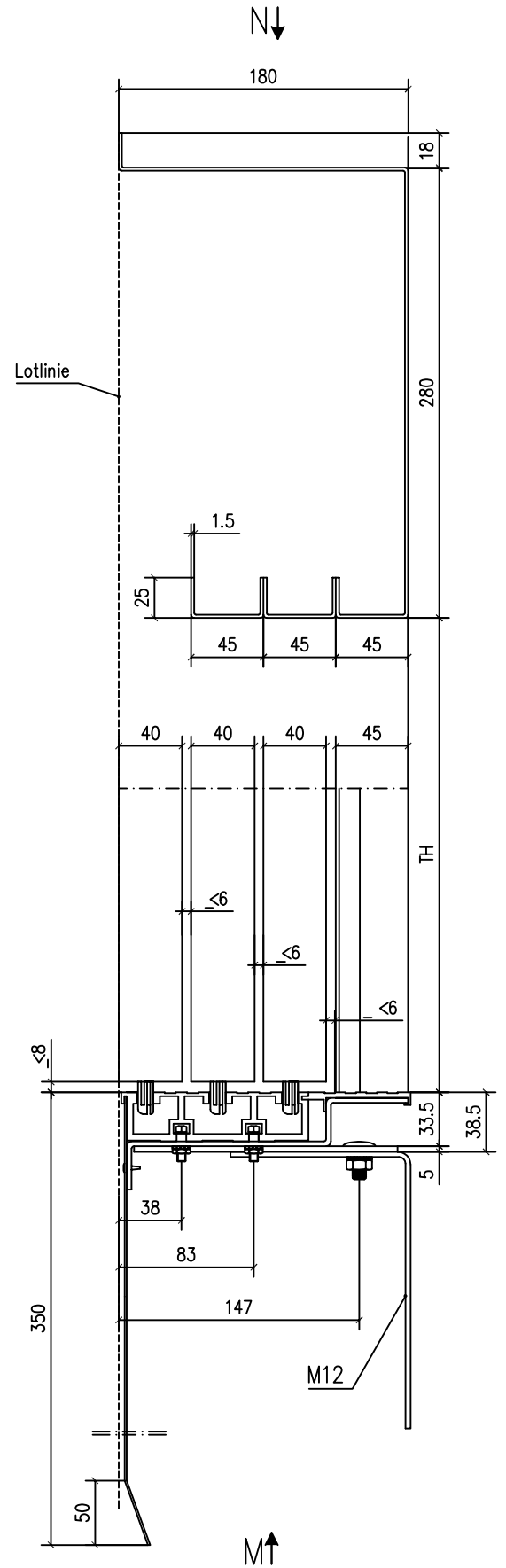
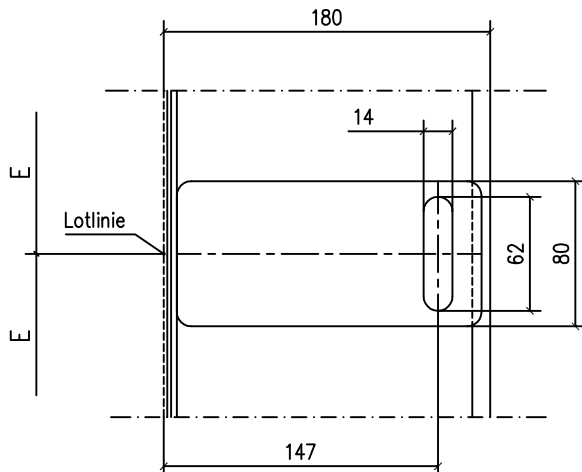
Detail R



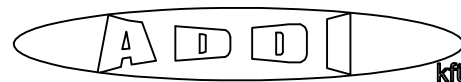
Ansicht N



Ansicht M



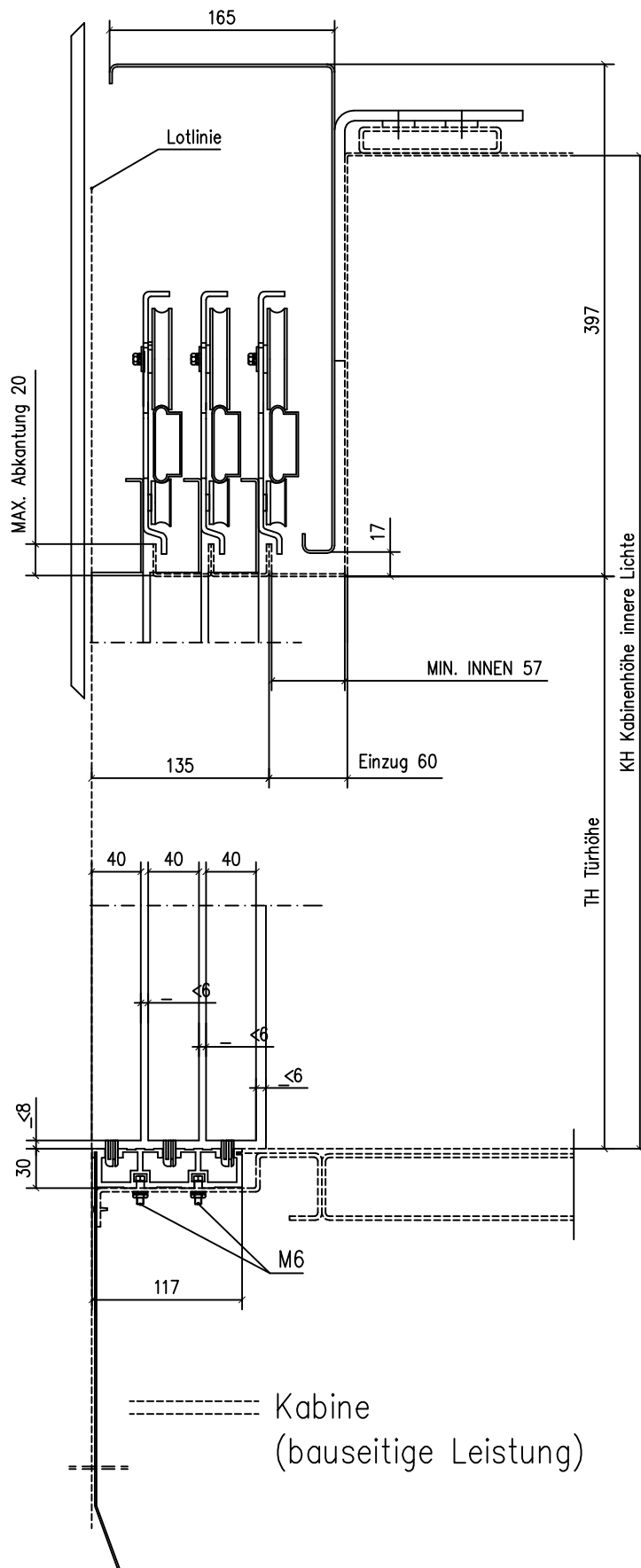
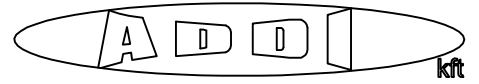
Abmessungen: ST 6/Z



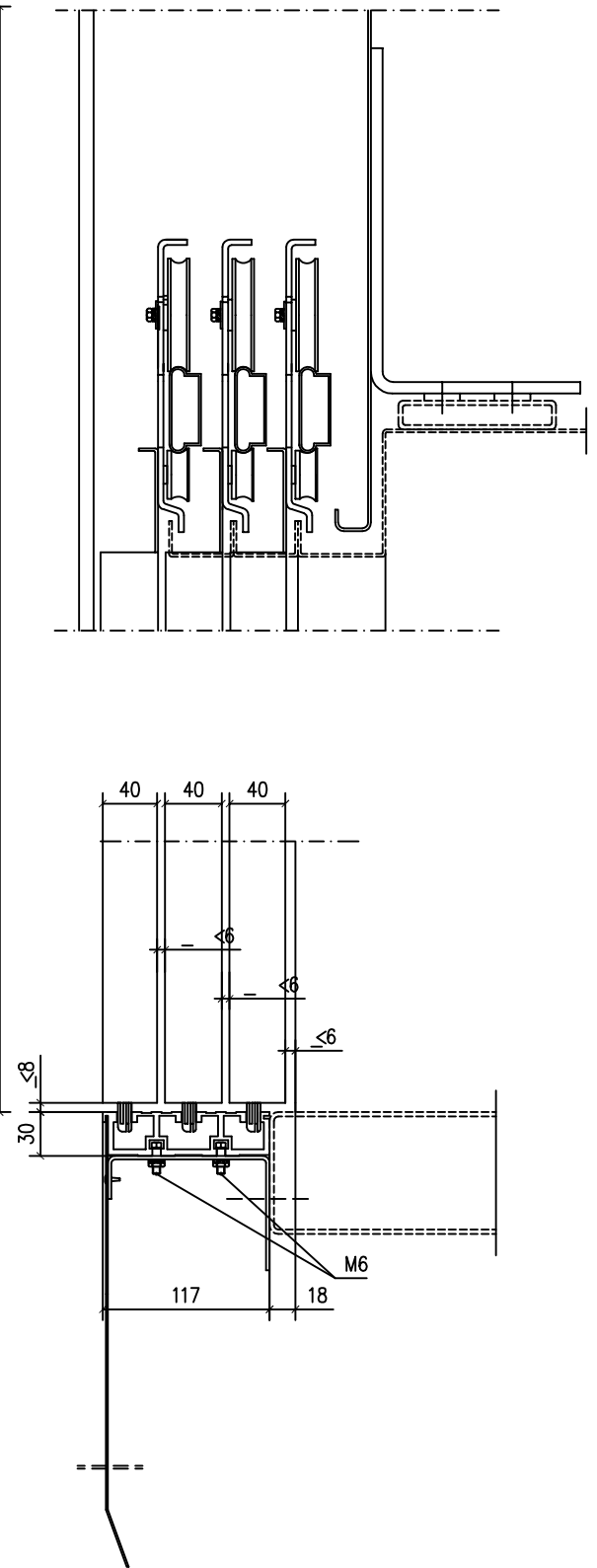
TB	GA	GB	E	F	O	Gewicht
1400	1943	1545	515	300	136	147
1500	2076	1645	548	350	153	157
1600	2210	1745	582	400	170	164
1700	2343	1845	461	450	186	174
1800	2476	1945	486	500	203	185
1900	2610	2045	511	550	220	195
2000	2743	2145	536	600	236	202
2100	2876	2245	561	150	253	210
2200	3010	2345	586	200	270	218
2300	3143	2445	489	250	286	229
2400	3276	2545	509	300	303	237
2500	3410	2645	529	350	320	244
2600	3543	2745	549	400	336	252
2700	3676	2845	569	450	353	264
2800	3810	2945	589	500	370	270
2900	3943	3045	609	550	386	280
3000	4076	3145	629	600	403	295

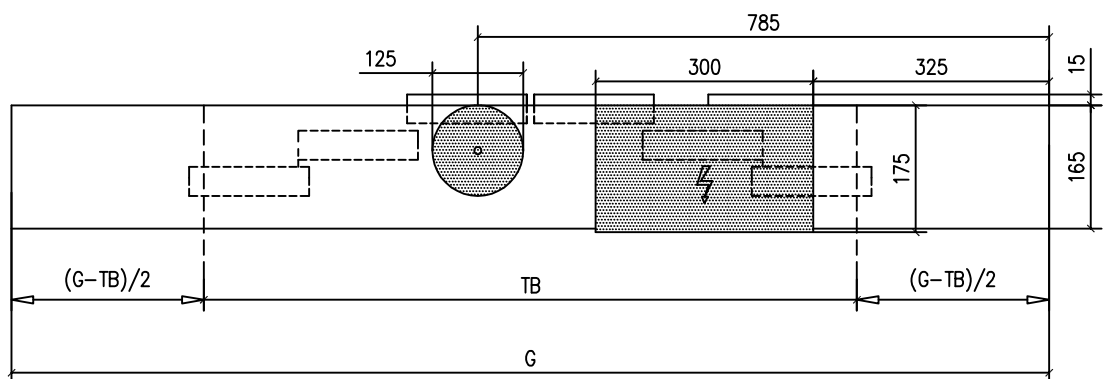
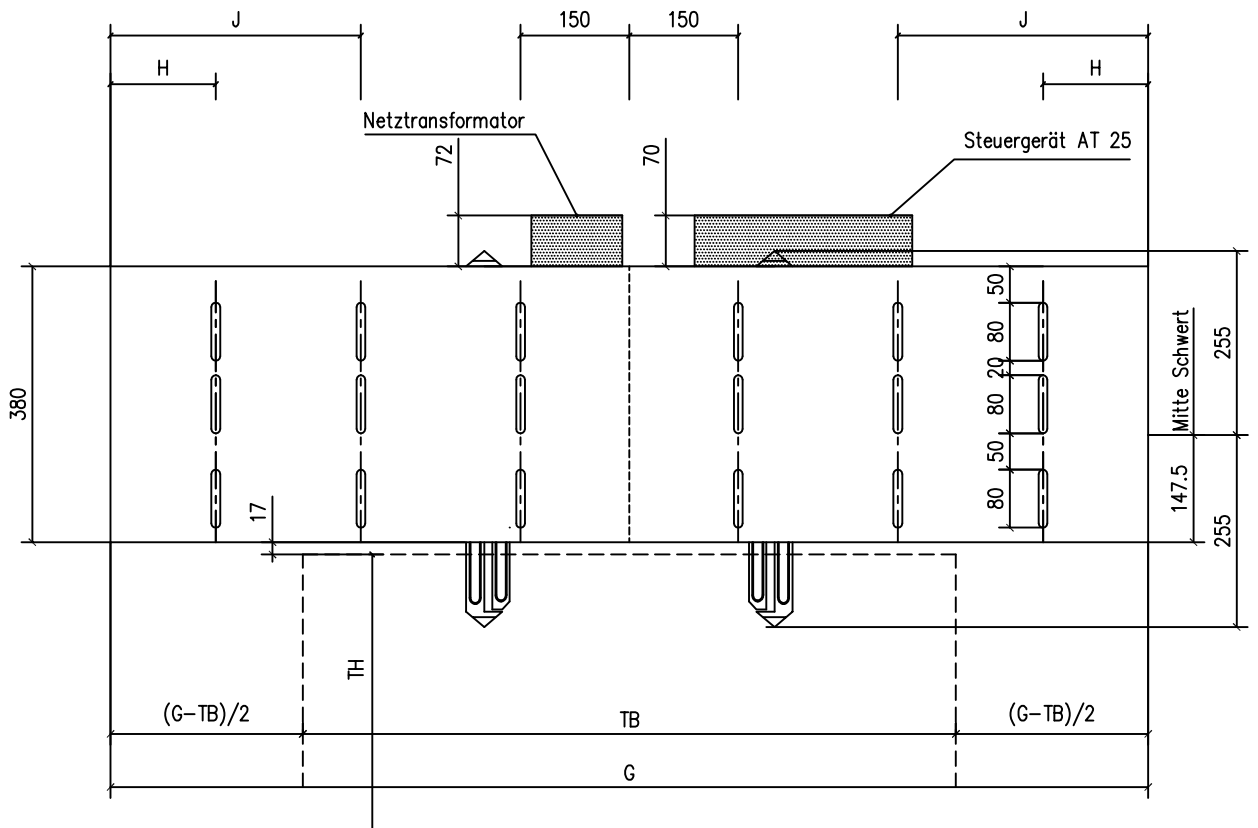
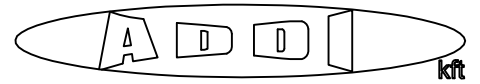
Gewicht der Türen mit
 doppelwandigen Türblättern, einwandigen Zargen,
 pulverbeschichtet, TH = 2000 mm

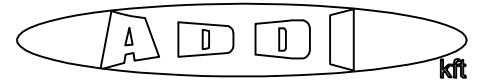
Maßblatt KT 6/Z



alternativ:

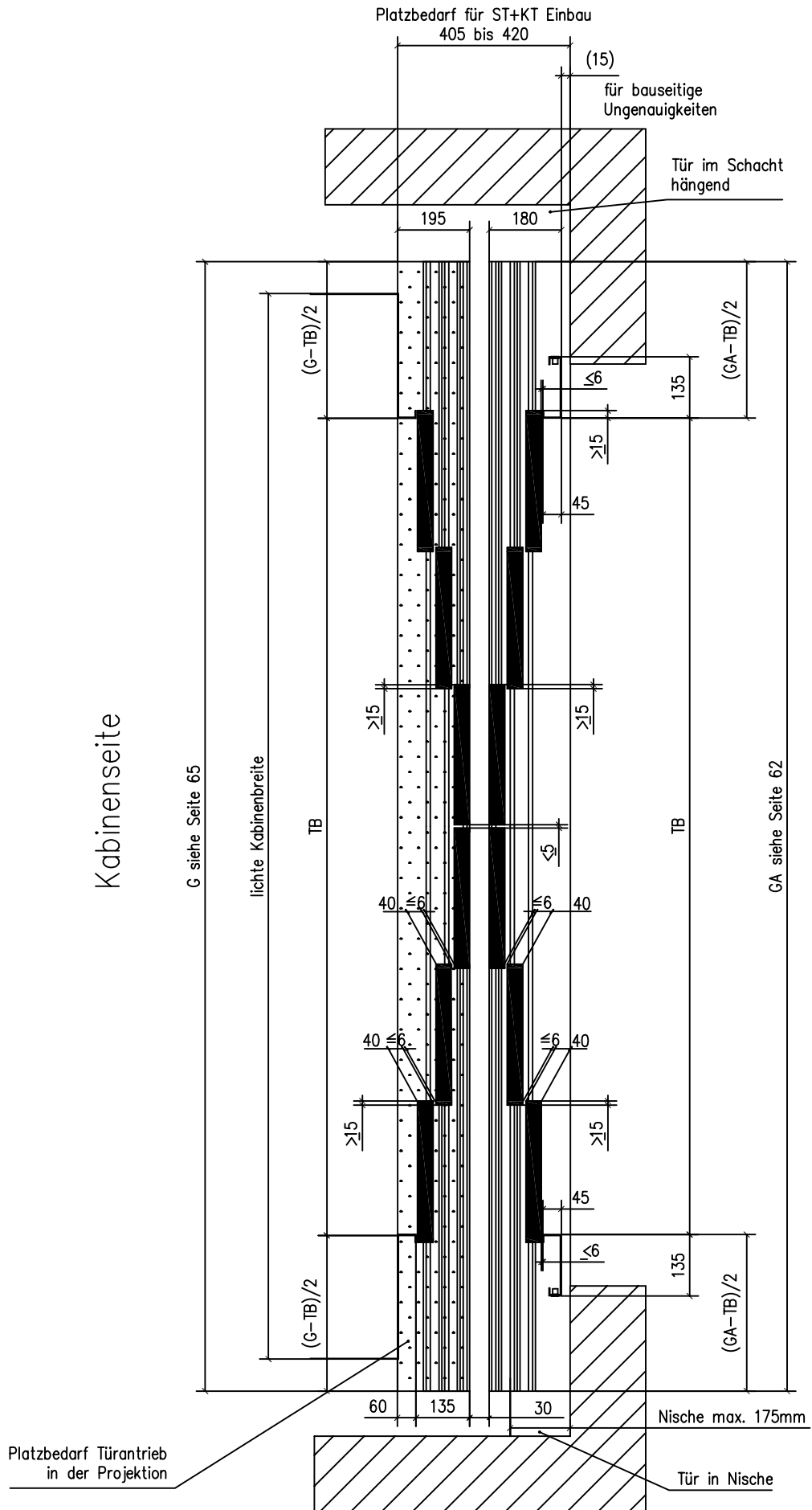
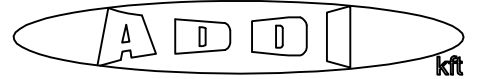




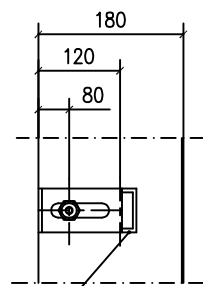
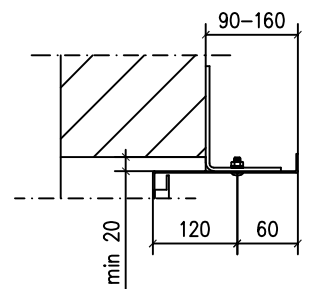
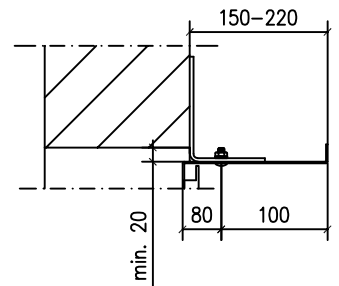
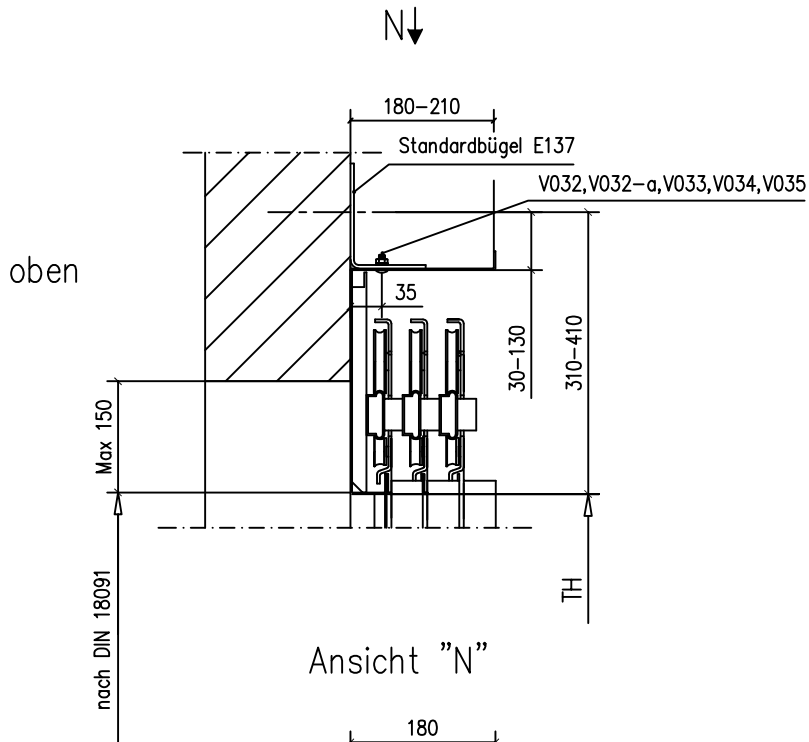
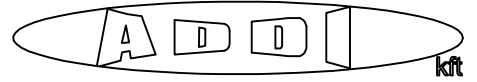


TB	G	H	J	K	Gewicht Türantrieb ohne Türblätter
1400	1943	338.5	–	–	87
1500	2076	355	–	–	90
1600	2210	371.5	–	–	93
1700	2343	388	–	–	96
1800	2476	404	–	–	99
1900	2610	421	800	–	102
2000	2743	437.5	834	–	105
2100	2876	454	868	–	108
2200	3010	470.5	900	–	112
2300	3143	487	934	–	116
2400	3276	504.5	970	–	120
2500	3410	521	1001	–	124
2600	3543	537.5	1040	–	128
2700	3676	554	1070	–	133
2800	3810	570.5	1100	–	138
2900	3943	587	1140	–	143
3000	4076	604.5	1170	–	148

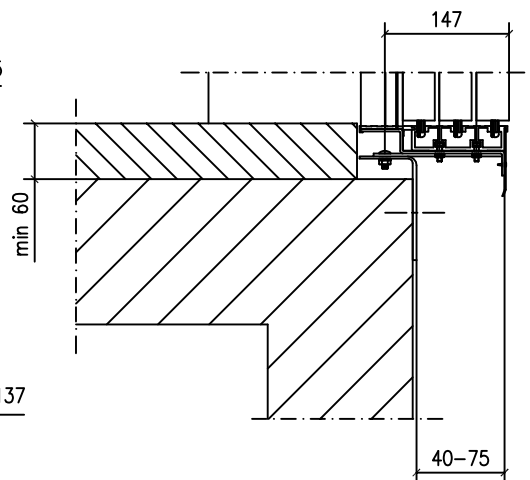
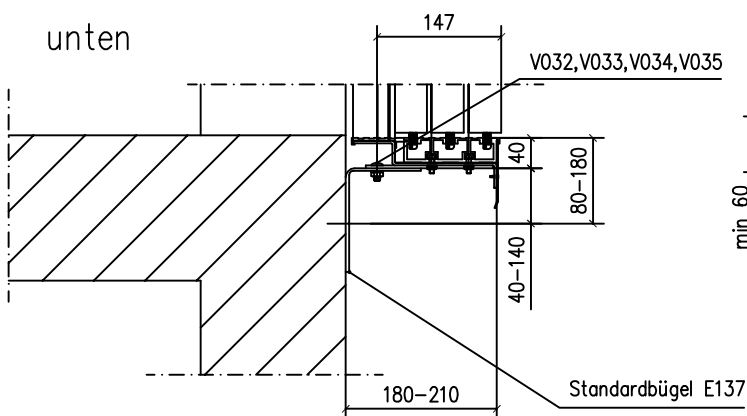
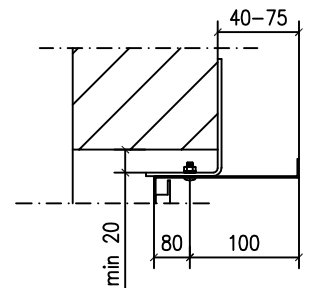
Grundriß ST 6/Z und KT 6/Z



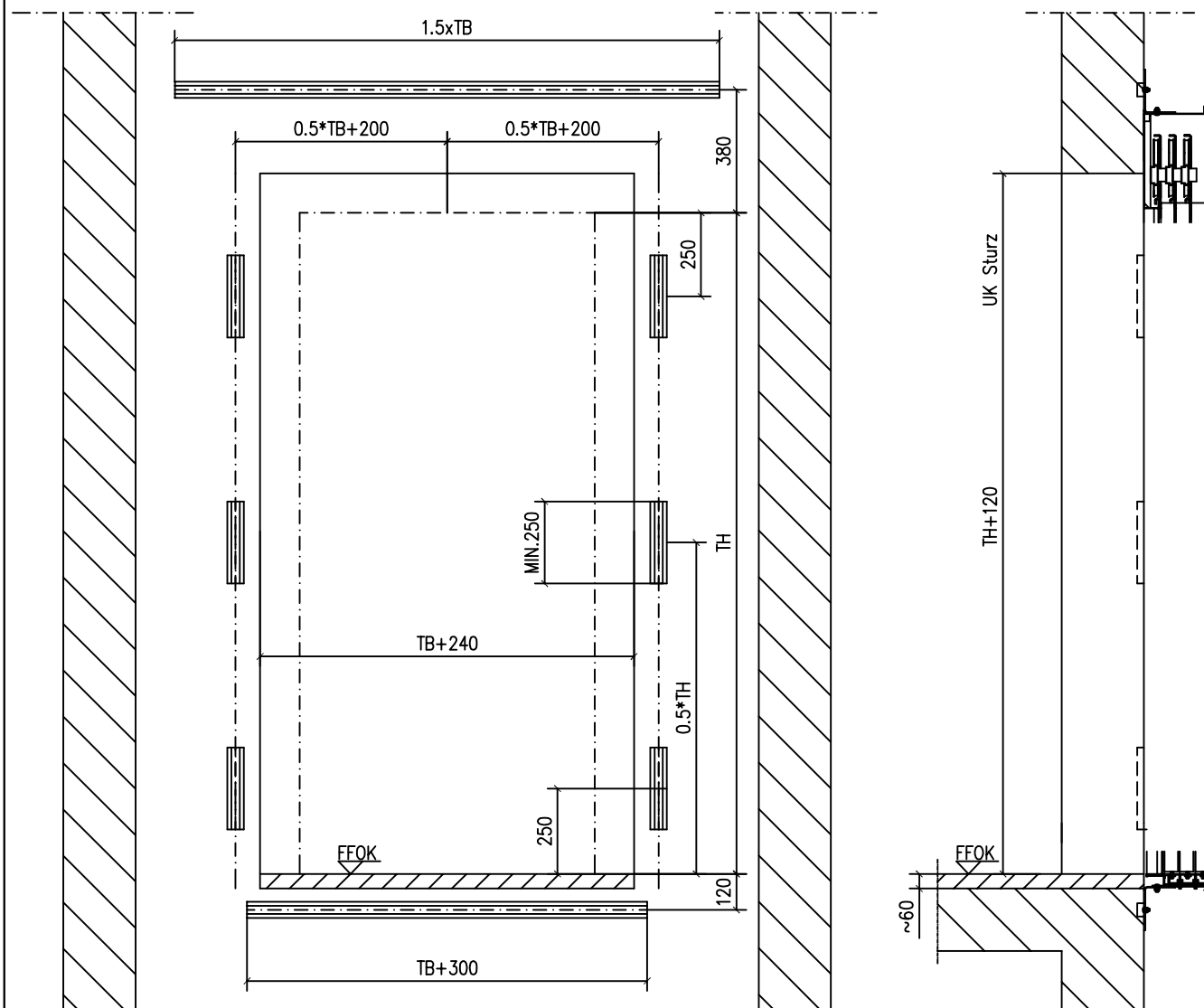
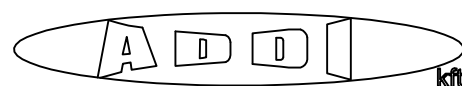
Befestigung für ST 6/Z



Werkseitige Kunststoffolie
bei Bedarf aufschneiden



Ankerschienen - Befestigung ST 6/Z - Türen im Schacht hängend



Ankerschienen - Befestigung ST 6/Z - Türen in Mauernische stehend

