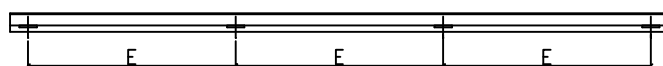
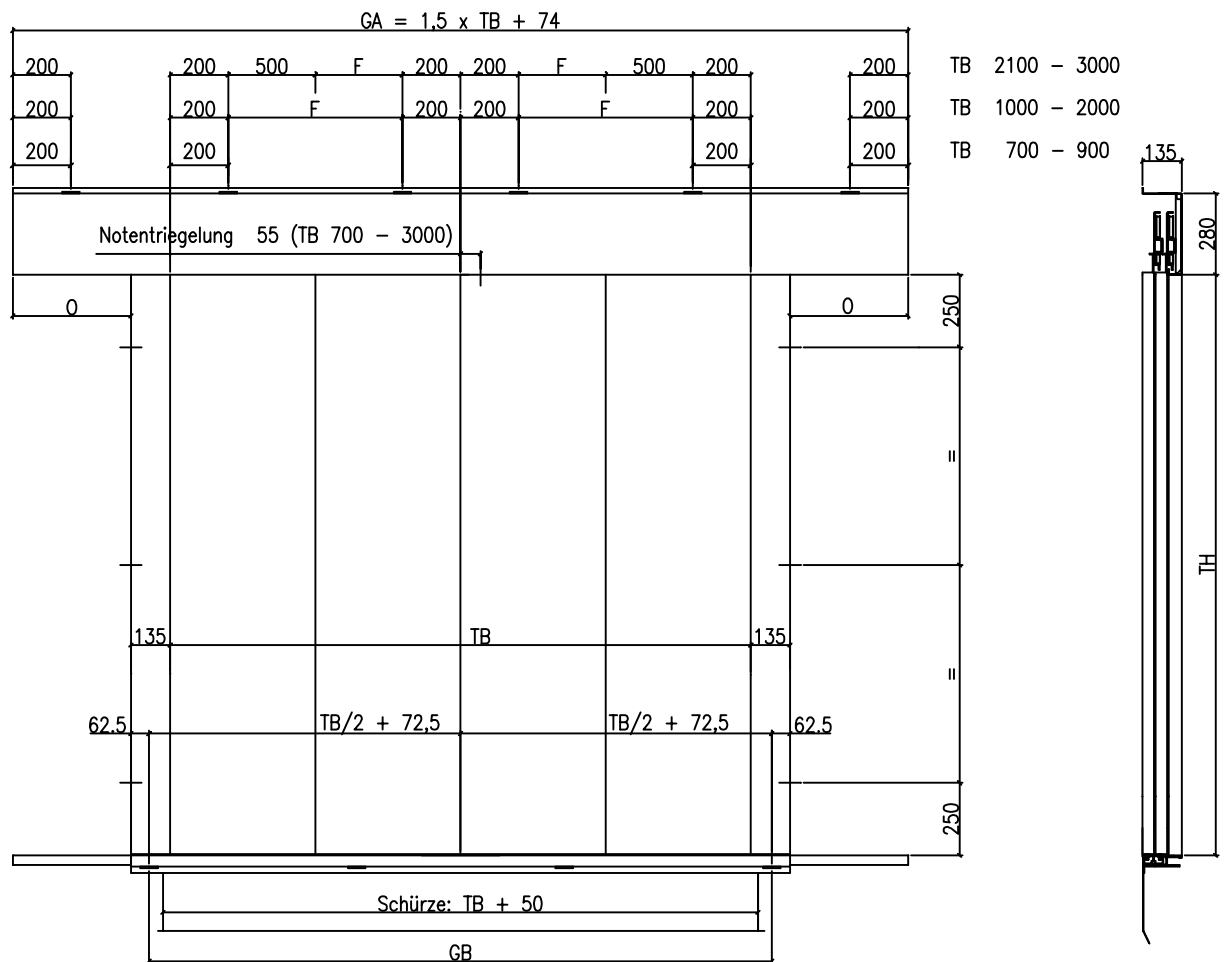
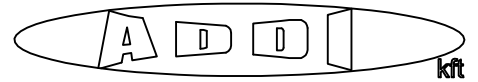


Bei Änderung der Zargentiefe bitte beide Maße (E+F) angeben.

Änderungswunsch	
A = mm	D = mm
B = mm	E = mm
C = mm	F = mm

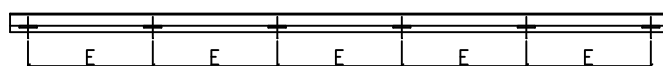
Schachttür ST 4/Z für TB 700 bis 3000



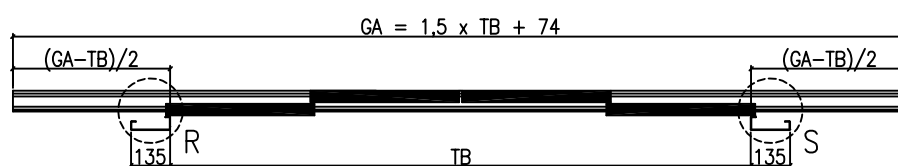
TB 700 - 1600



TB 1700 - 2200

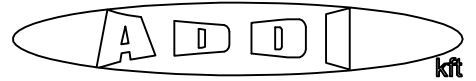


TB 2300 - 3000

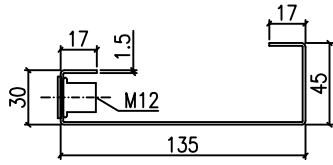


Details siehe Seite 41

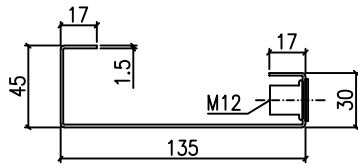
Detail ST 4/Z



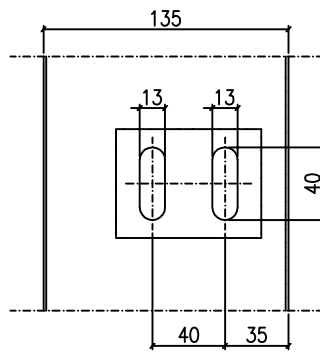
Detail R



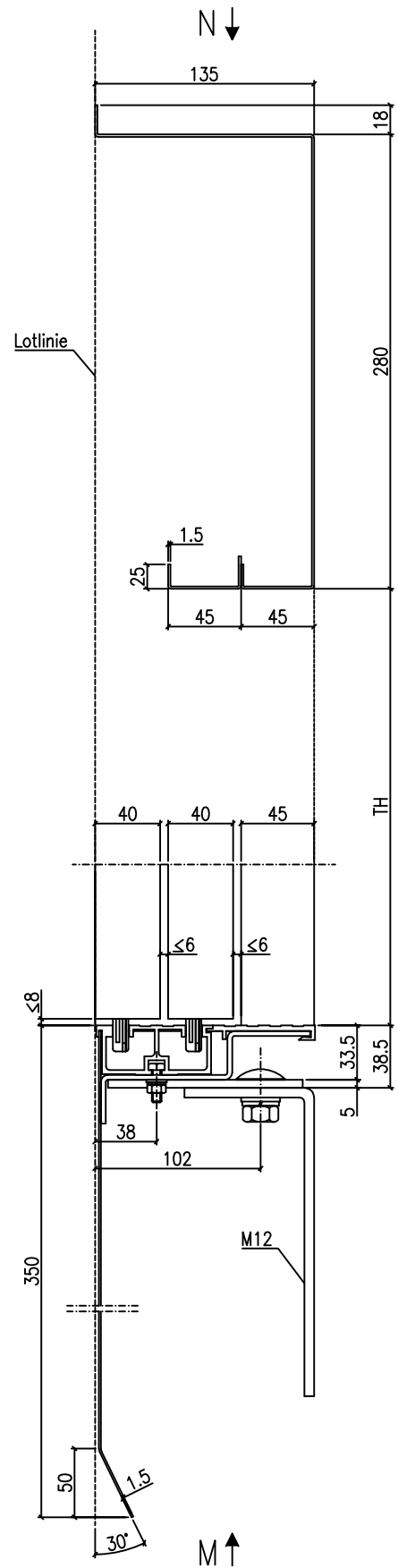
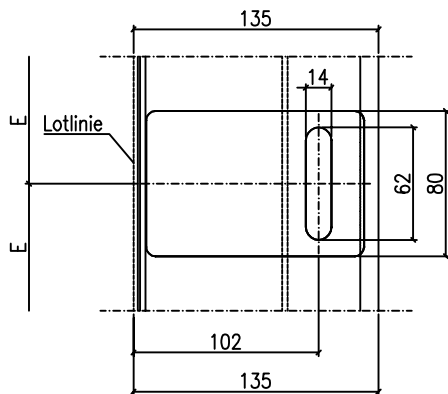
Detail S



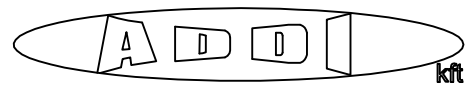
Ansicht N



Ansicht M



Abmessungen: ST 4/Z

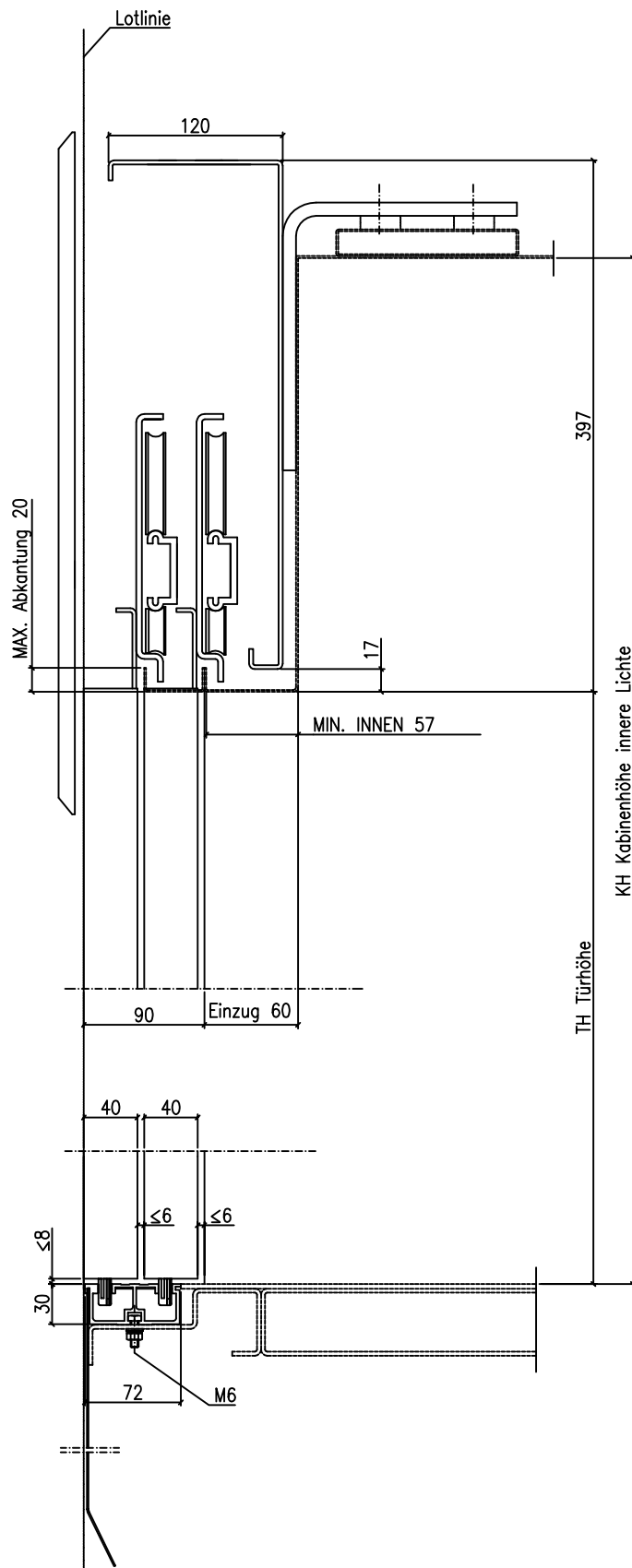
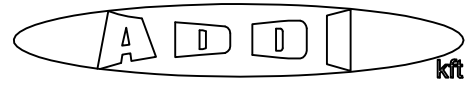


TB	GA 1.5xTB+74	GB	E	F	O	Gewicht
*700	1240	845	281	–	135	93
*800	1340	945	315	–	135	101
*900	1440	1045	348	–	135	111
1000	1574	1145	382	100	152	117
1100	1724	1245	415	150	177	127
1200	1874	1345	448	200	202	134
1300	2024	1445	482	250	227.	144
1400	2174	1545	515	300	252	155
1500	2324	1645	548	350	277	165
1600	2474	1745	582	400	302	172
1700	2624	1845	461	450	327	180
1800	2774	1945	486	500	352	188
1900	2924	2045	511	550	377	199
2000	3074	2145	536	600	402	207
2100	3224	2245	561	150	427	214
2200	3374	2345	586	200	452	222
2300	3524	2445	489	250	477	234
2400	3674	2545	509	300	502	240
2500	3824	2645	529	350	527	250
2600	3974	2745	549	400	552	265

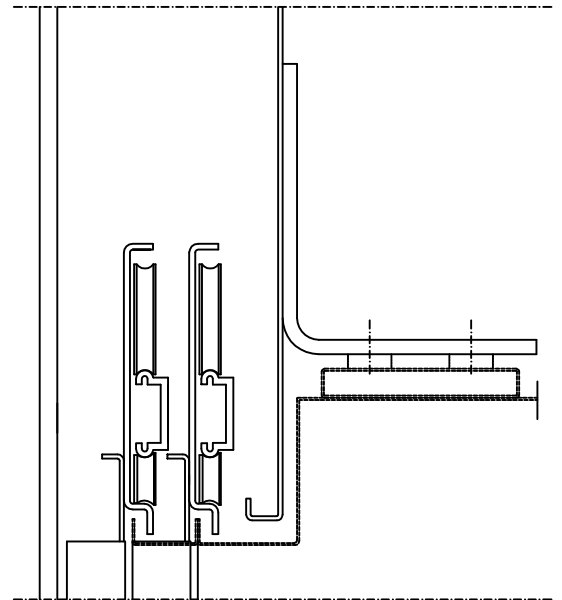
Gewicht der Türen mit
 doppelwandigen Türblättern, einwandigen Zargen,
 pulverbeschichtet, TH = 2000 mm

* Fixmass

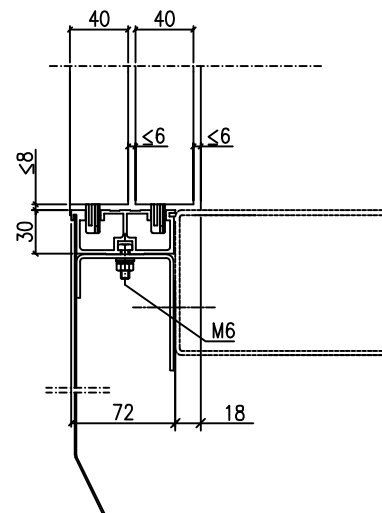
Maßblatt KT 4/Z

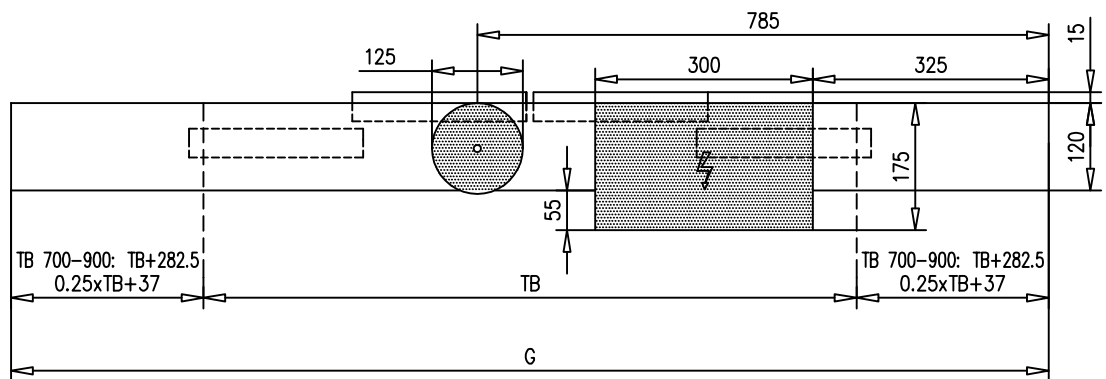
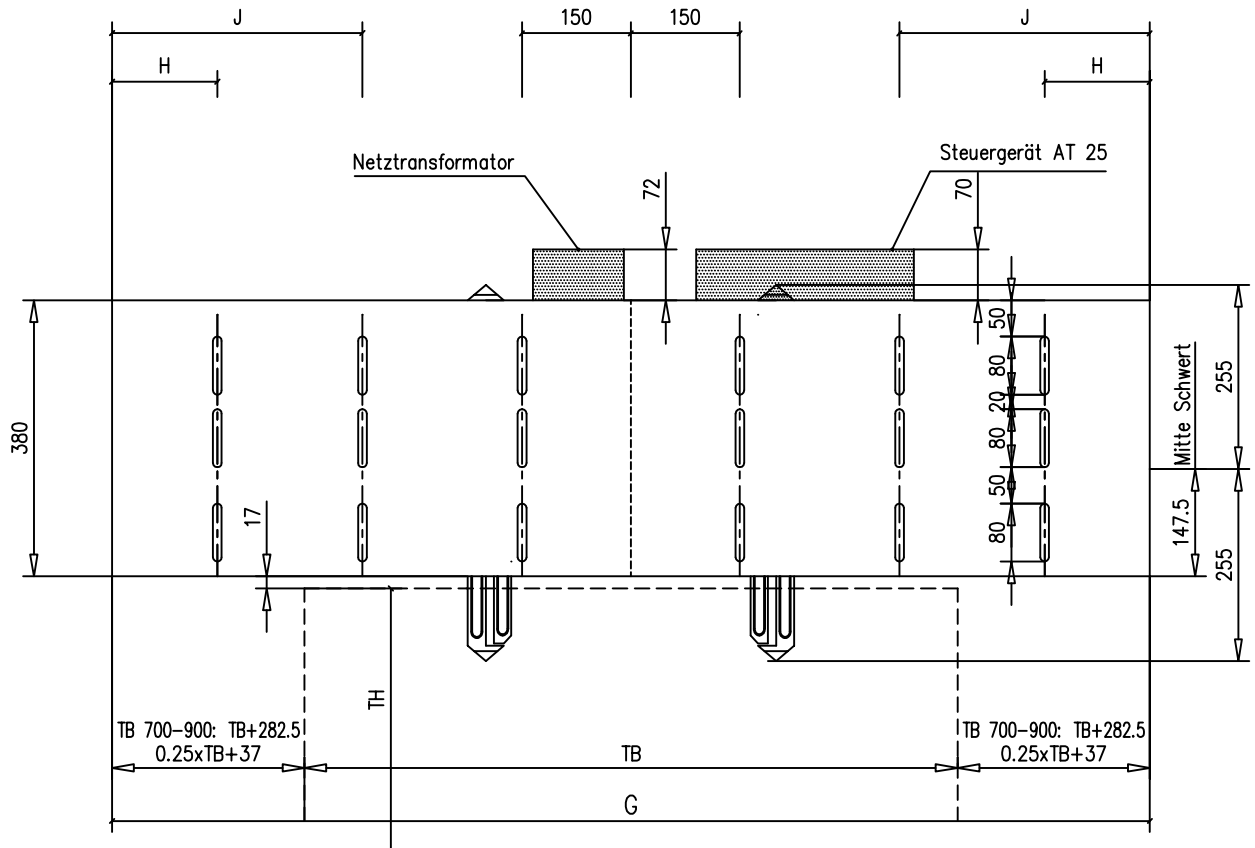


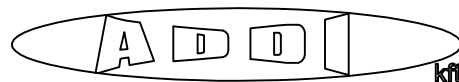
alternativ:



==== Kabine
(bauseitige Leistung)

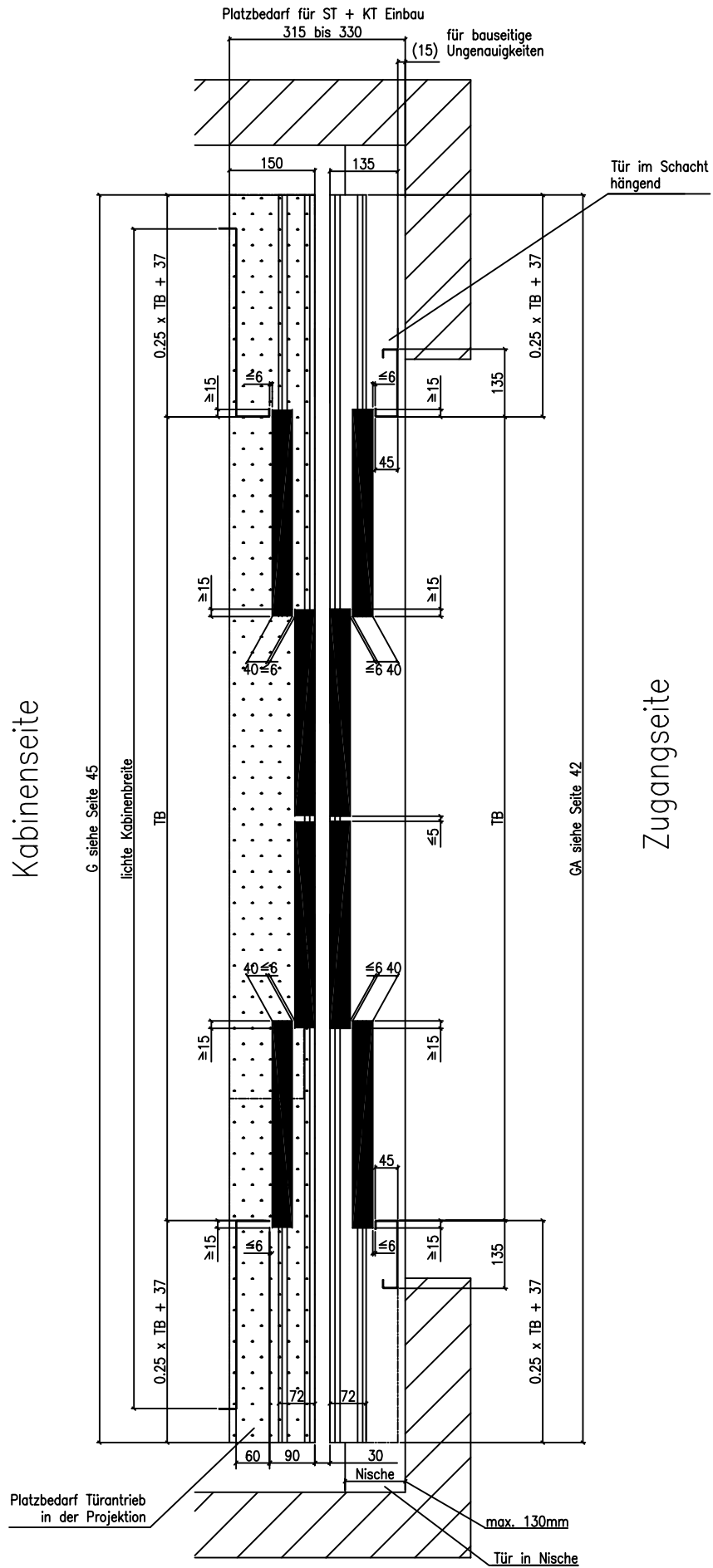
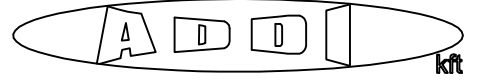




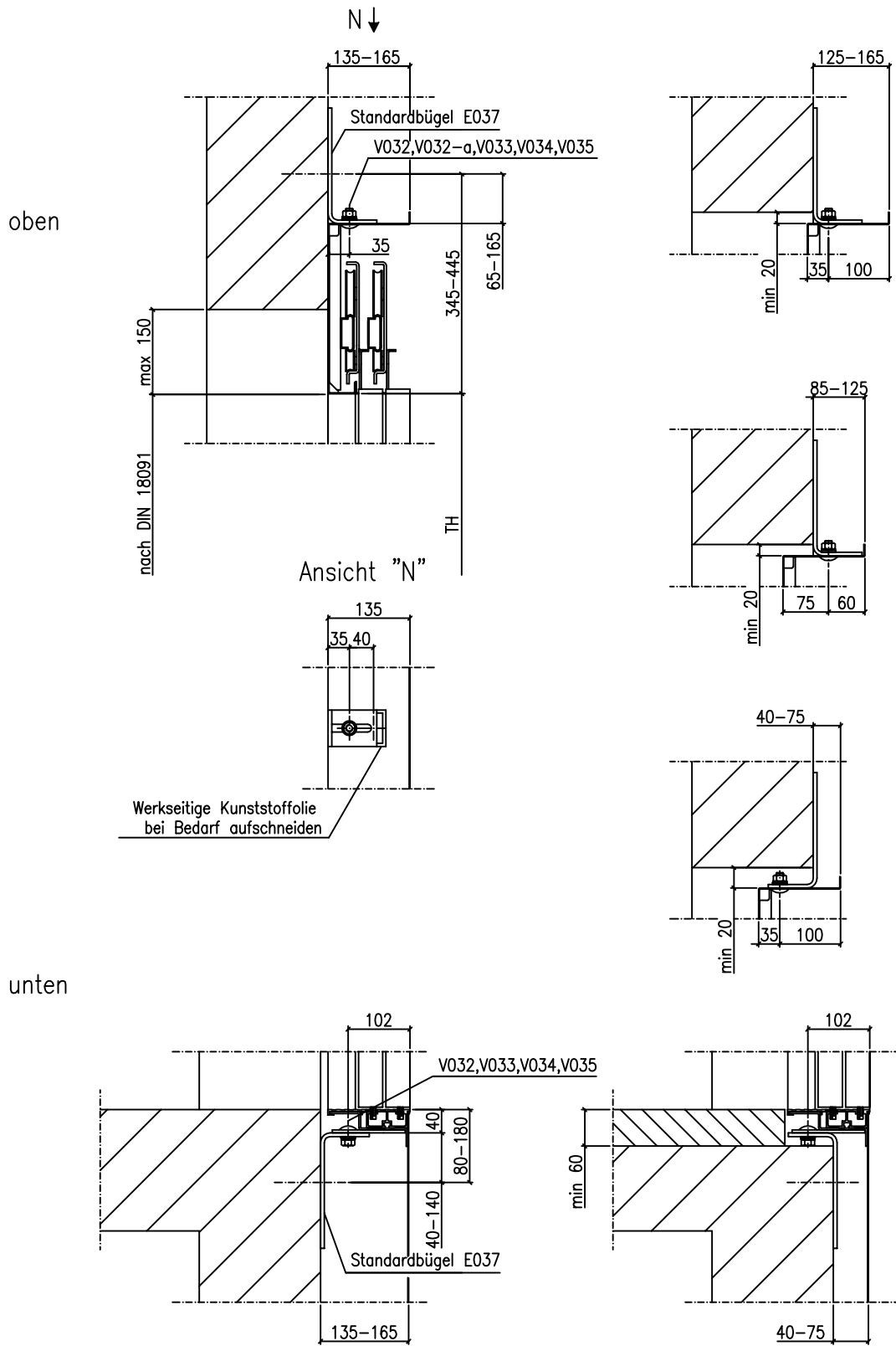
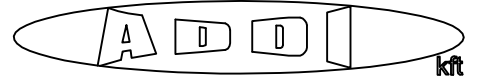


TB	G 1.5xTB+74	H	J	K	Gewicht Türantrieb ohne Türblätter
700	1265	353	–	–	54
800	1365	353	–	–	57
900	1465	353	–	–	54
1000	1574	349	–	–	57
1100	1724	375	–	–	60
1200	1874	400	–	–	63
1300	2024	424	–	–	66
1400	2174	449	–	–	69
1500	2324	475	–	–	72
1600	2474	500	–	–	75
1700	2624	524	–	–	78
1800	2774	550	827	–	82
1900	2924	575	877	–	86
2000	3074	600	927	–	90
2100	3224	625	977	–	94
2200	3374	650	1027	–	98
2300	3524	675	1077	–	103
2400	3674	700	1127	–	108
2500	3824	725	1177	–	113
2600	3974	750	1227	–	118

Grundriß ST 4/Z und KT 4/Z



Befestigung für ST 4/Z



Ankerschienen - Befestigung ST 4/Z - Türen im Schacht hängend

