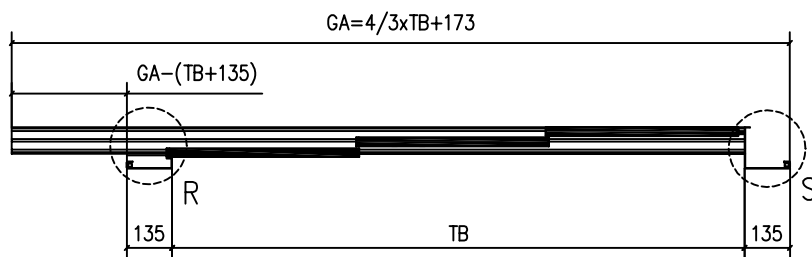
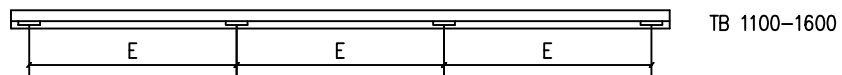
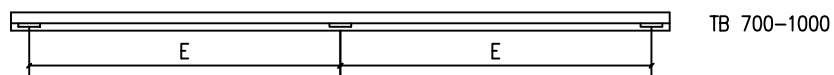
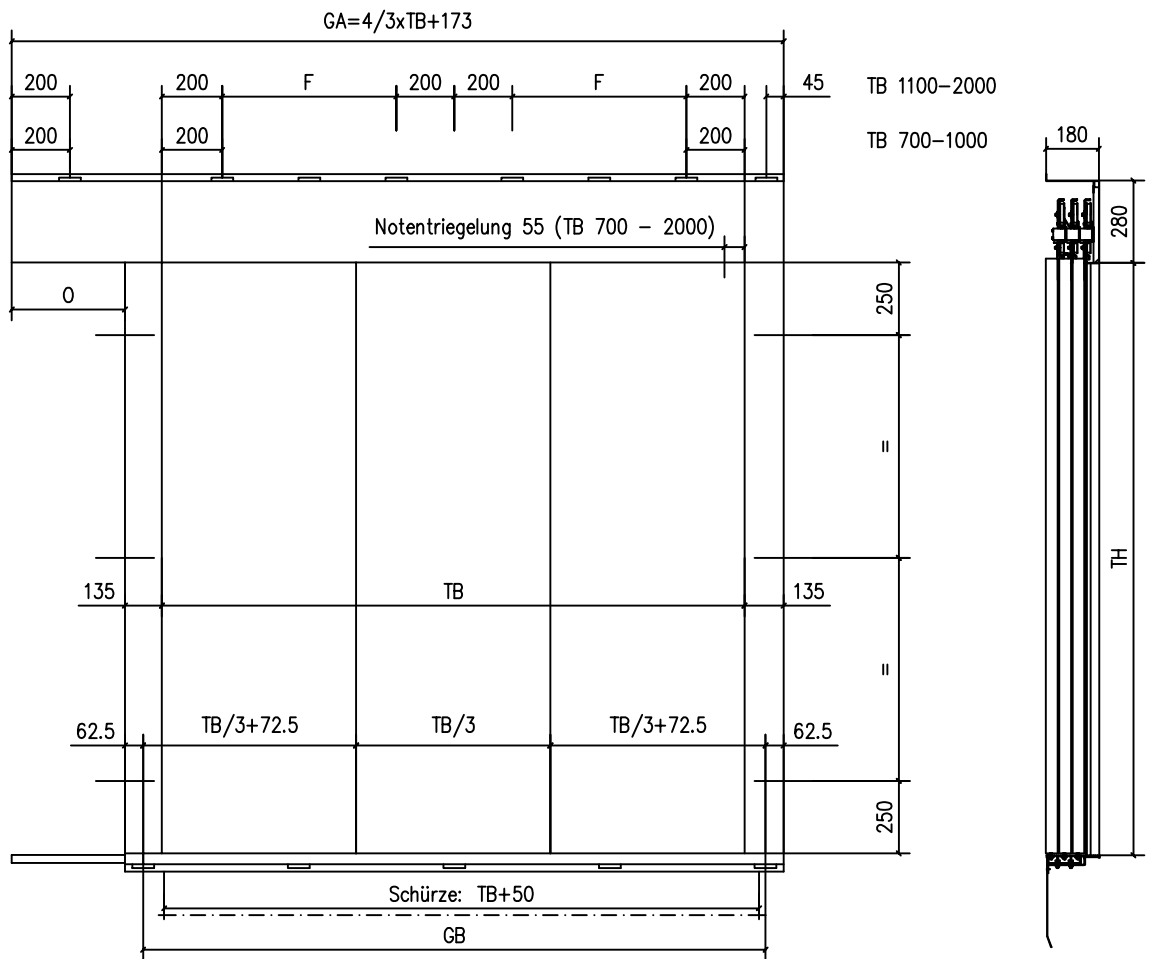
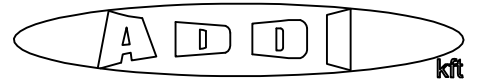


Bei Änderung der Zargentiefe bitte beide Maße (E+F) angeben.

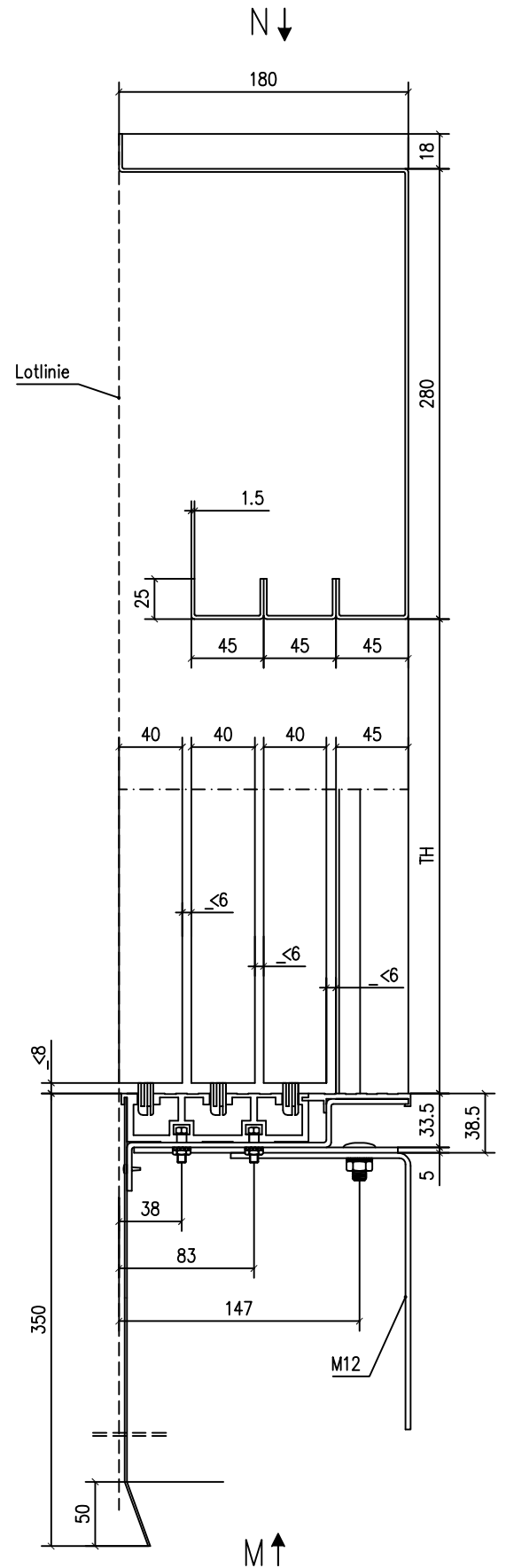
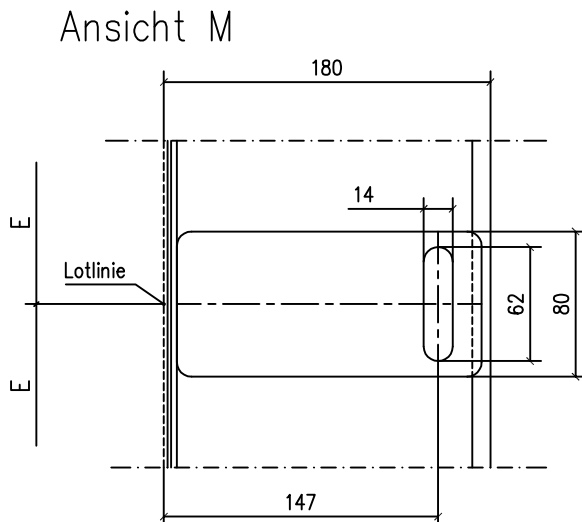
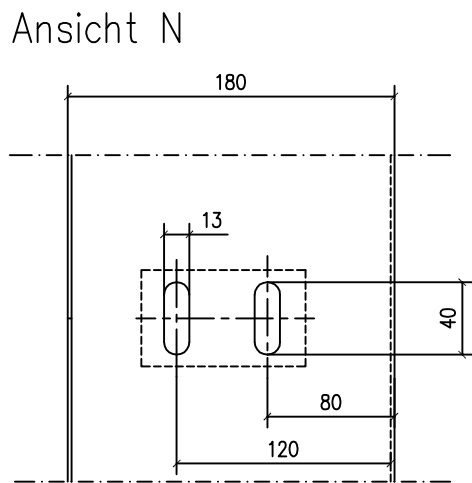
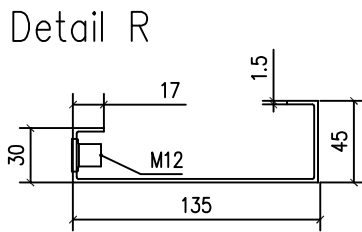
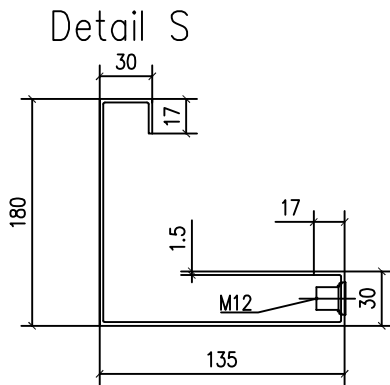
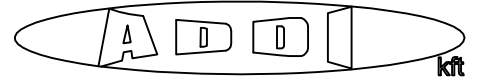
Änderungswunsch	
A = ..... mm	D = ..... mm
B = ..... mm	E = ..... mm
C = ..... mm	F = ..... mm

# Schachttür ST 3/L (R spiegelbildlich)



Detail siehe Seite 51

Detail ST 3/L  
 ST 3/R spiegelbildlich



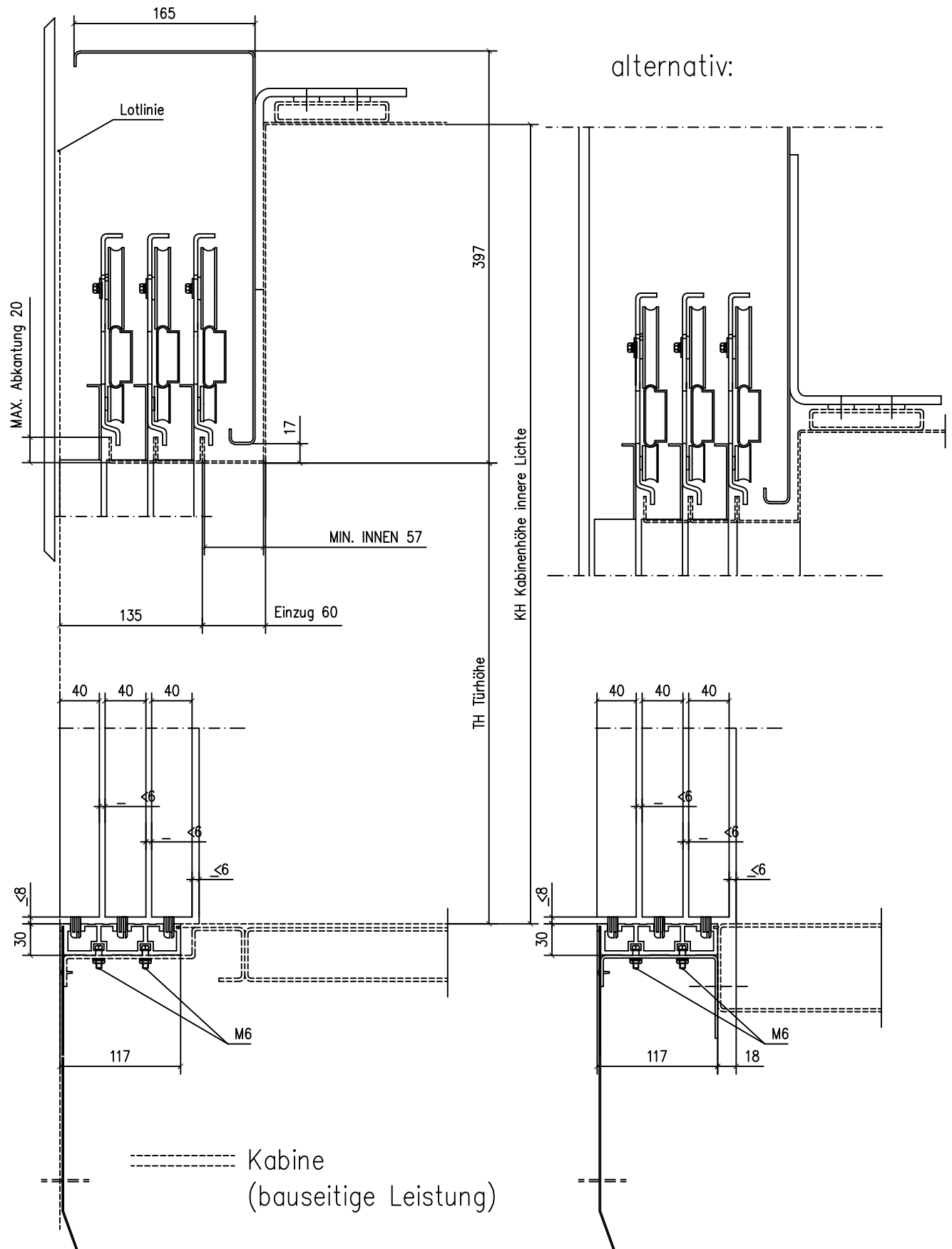
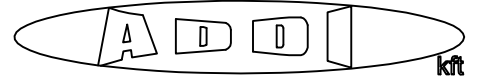
# Abmessungen ST 3/L-R



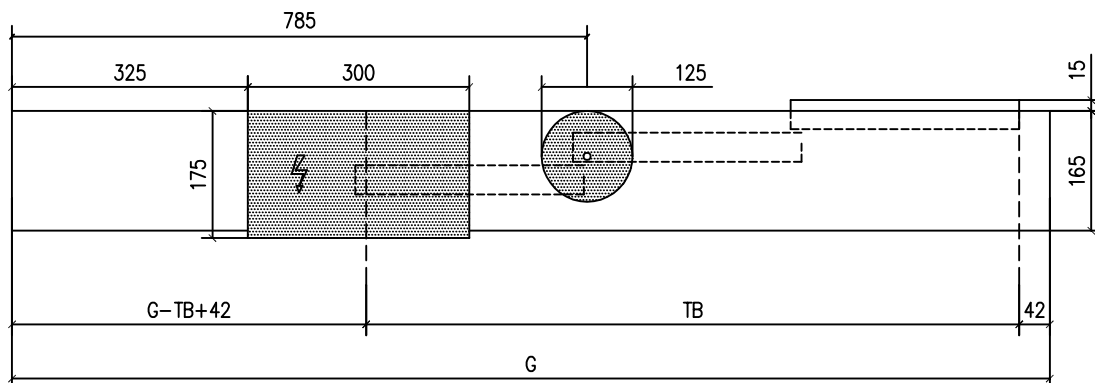
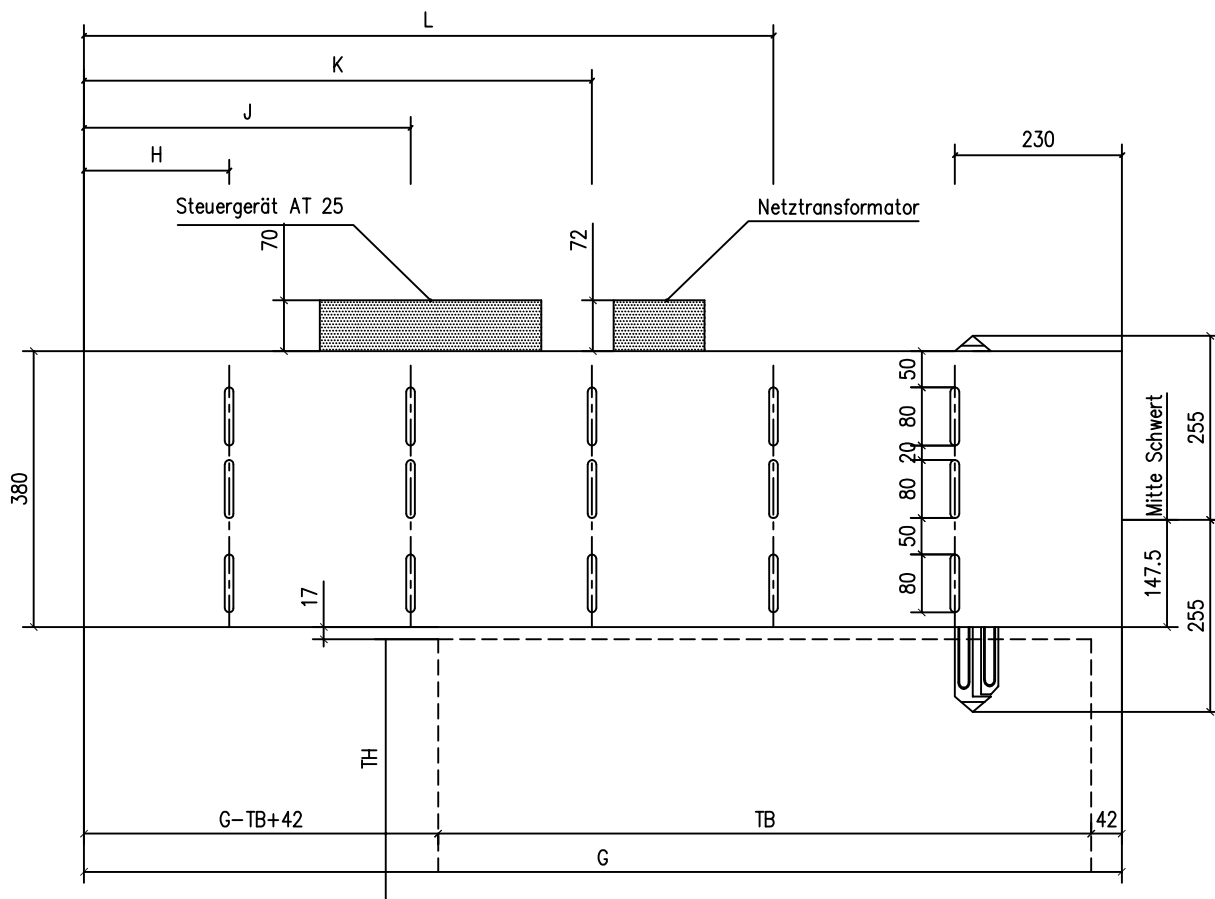
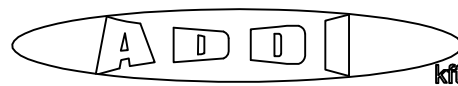
TB	GA	GB	E	F	O	Gewicht
700	1107	845	422.5	–	137	95
800	1240	945	472.5	–	170	103
900	1373	1045	522.5	–	203	112
1000	1507	1145	572.5	–	237	120
1100	1640	1245	415	150	270	129
1200	1773	1345	448	200	303	137
1300	1907	1445	482	250	337	146
1400	2040	1545	515	300	370	154
1500	2173	1645	548	350	403	163
1600	2307	1745	582	400	437	171
1700	2440	1845	461	450	470	180
1800	2573	1945	486	500	503	188
1900	2707	2045	511	550	537	197
2000	2840	2145	536	600	570	205

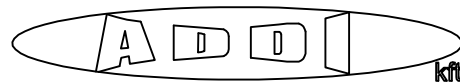
Gewicht der Türen mit  
 doppelwandigen Türblättern, einwandigen Zargen,  
 pulverbeschichtet, TH = 2000 mm

# Maßblatt KT 3/L-R



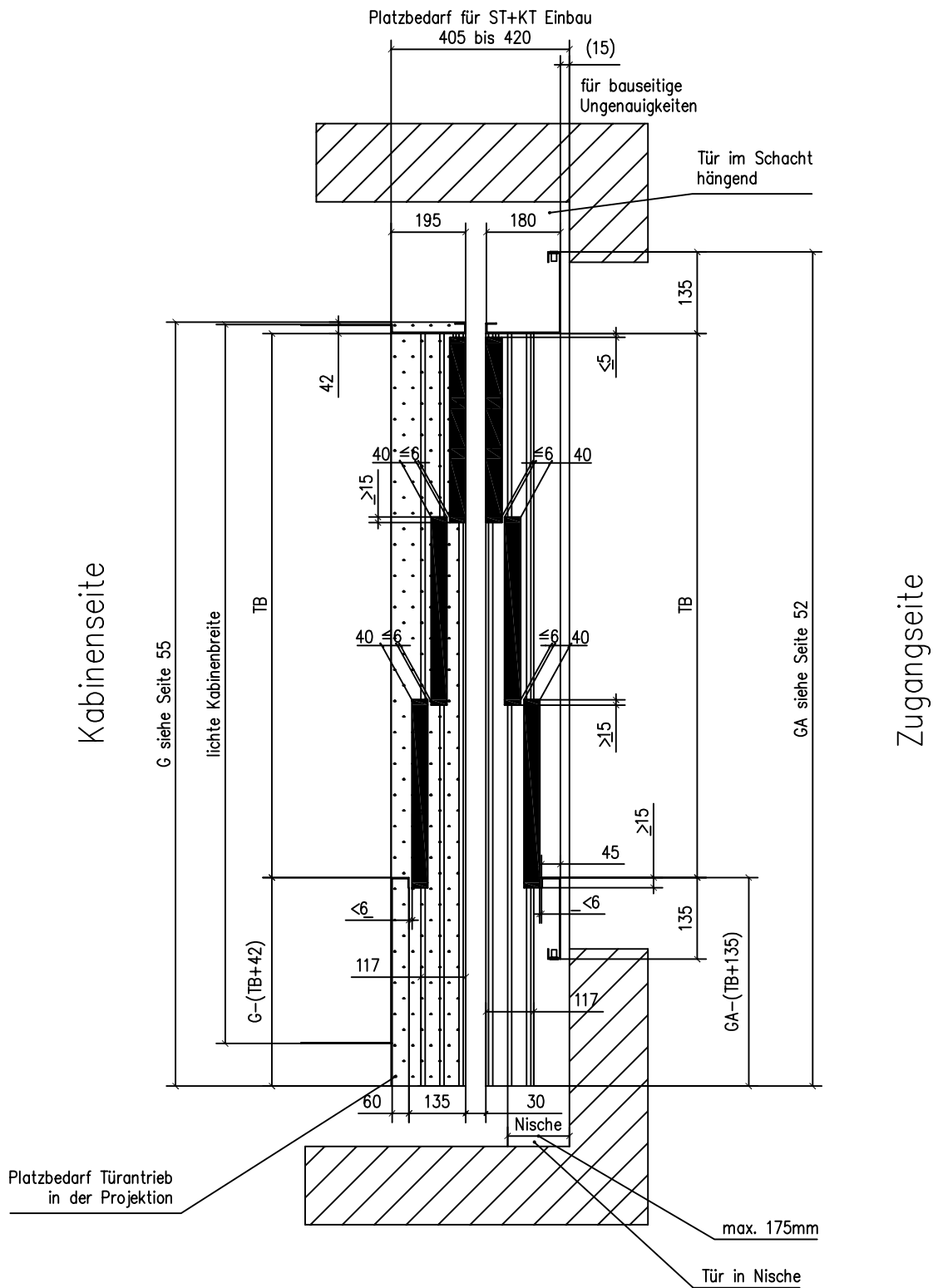
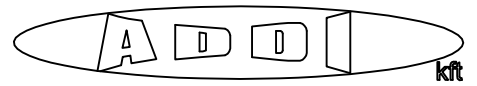
KT 3/R  
 (KT 3/L spiegelbildlich)





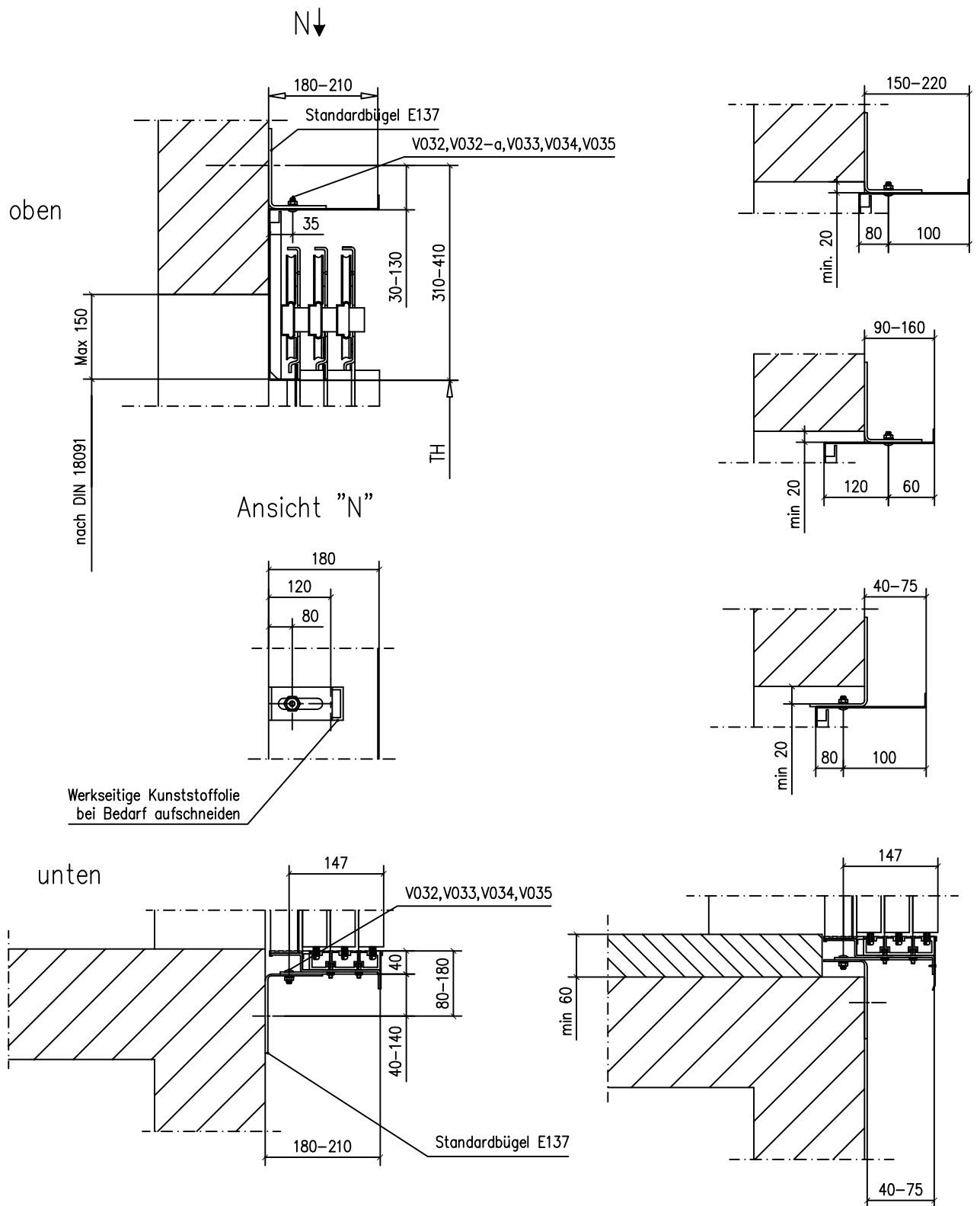
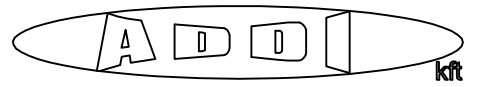
TB	G	H	J	K	L	Gewicht Türantrieb ohne Türblätter
700	1010	330	–	–	–	45
800	1145	365	–	–	–	48
900	1280	395	758	–	–	51
1000	1415	425	825	–	–	54
1100	1540	460	895	–	–	57
1200	1673	495	960	–	–	60
1300	1807	530	1030	–	–	63
1400	1940	325	560	861	1325	66
1500	2073	360	595	920	1425	69
1600	2207	392	630	985	1525	72
1700	2340	425	660	1280	1625	75
1800	2473	459	685	1350	1725	78
1900	2607	492	730	1415	1825	81
2000	2740	525	760	1480	2150	84

Grundriß ST 3/L und KT 3/L  
(ST 3/R und KT 3/R spiegelbildlich)

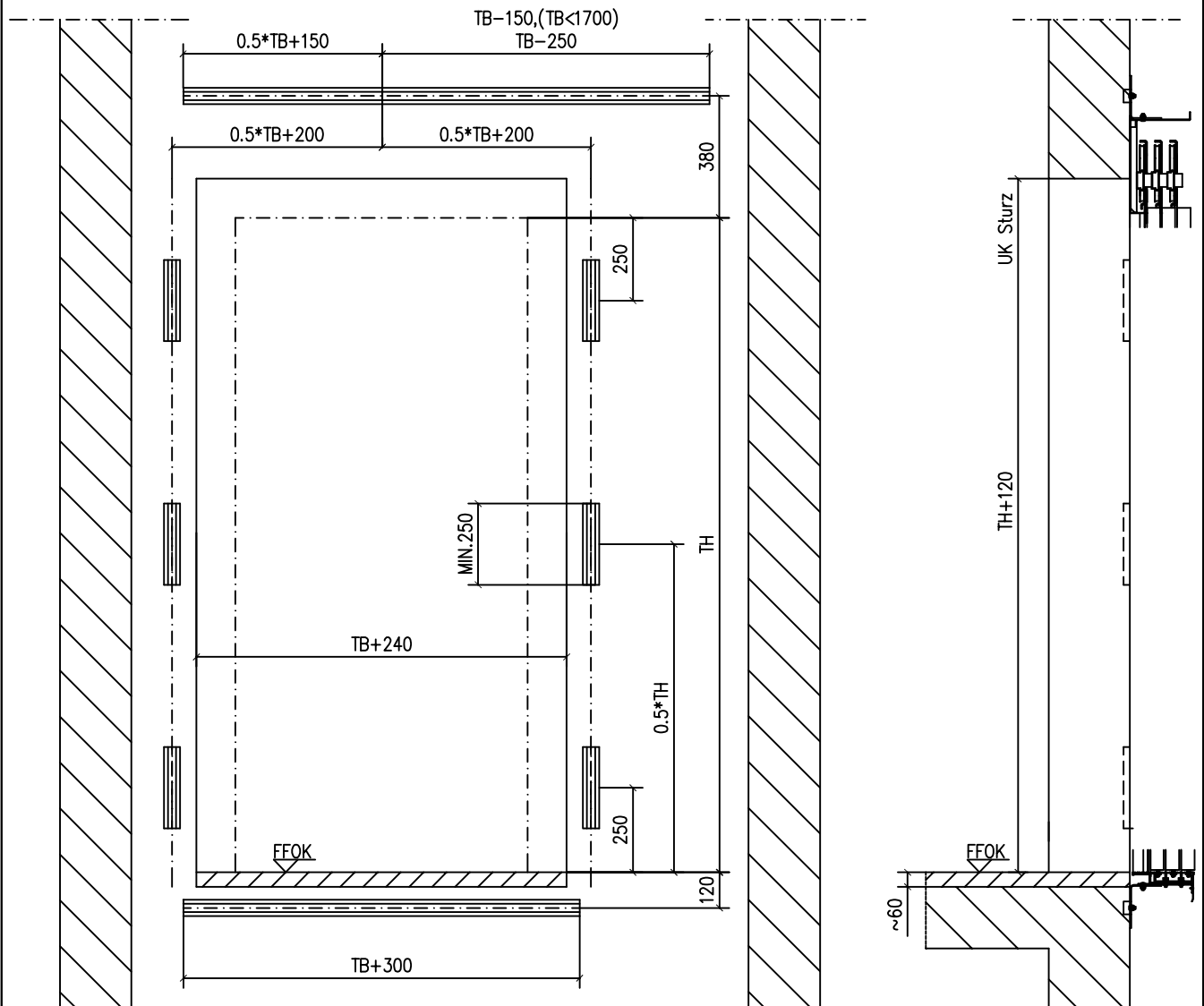
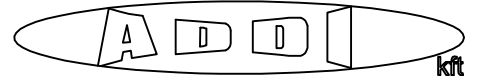




# Befestigung für ST 3/L-R



Ankerschienen - Befestigung  
 ST 3/L - Türen im Schacht hängend  
 ST 3/R - spiegelbildlich



# Ankerschienen - Befestigung

ST 3/L - Türen in Mauernische stehend  
 ST 3/R - spiegelbildlich

